



SIGNATURE
BUSINESS
SPACES



A SPACE THAT CAN SPEAK SUCCESS



There are many ways to reveal your success,
for a change let your office speak it for you.

Cutting edge design, luxury, elegant
landscaping and panoramic views, expect
much more than mere four walls.

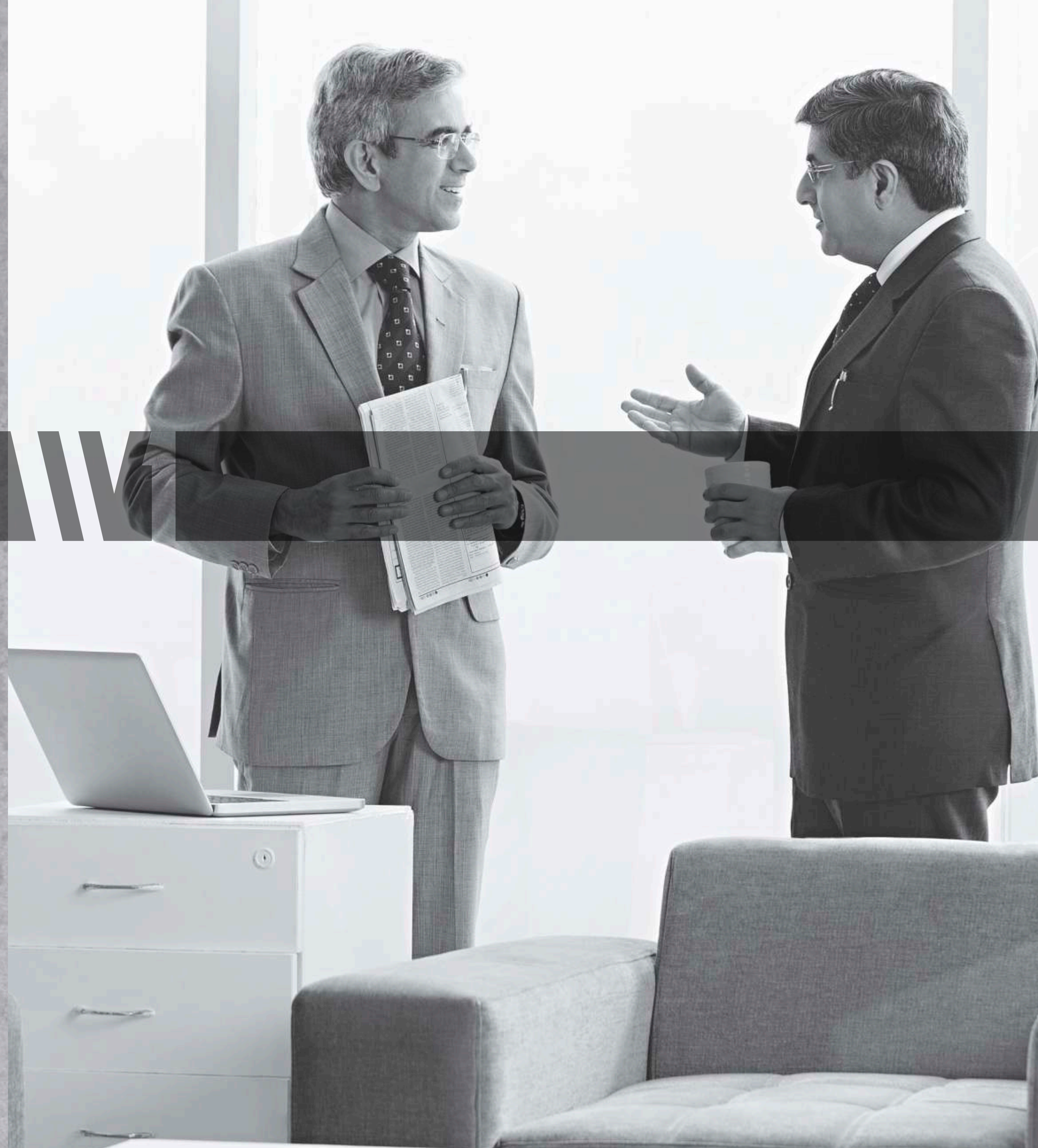
W1 is a trademark of comfort, convenience
and global lifestyle at work.

INSPIRE YOUR PEOPLE,
ENHANCE YOUR
CORPORATE CULTURE,
STAY AHEAD!

Everything is as it should be in a workplace designed with such an intent. Every facility, every system to create and enhance the corporate culture.

A separate entry for offices and corporate houses, column free flexible workspaces for creating openness, everything is worked out in the minutest of details.

The glass facade on the south, making the most of the best possible daylight cutting of the glare. The unmatched view, we have everything that takes your business to the next level.





AT THE RIGHT TIME AT THE RIGHT PLACE

W1 is designed for an international lifestyle experience at work, thus its location has been picked up with utmost care.

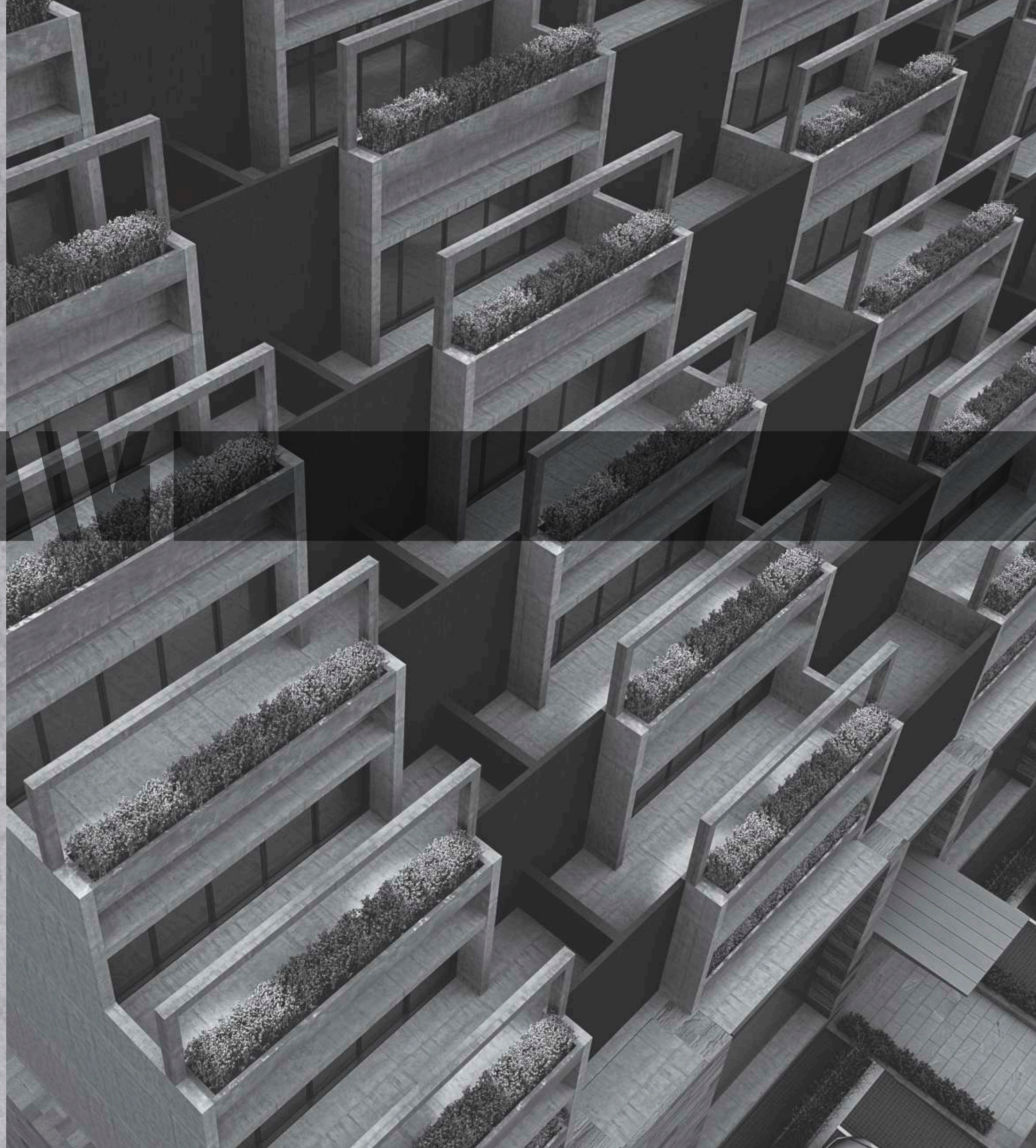
Positioned perfectly off S G Road, the fastest developing commercial hub of Ahmedabad, ease of access to the BRTS, luxury hotels, entertainment & leisure hubs.

With its strategic location and world class design, it is truly one of the most desirable workplace in the city.

A UNIQUE DESIGN OWN YOUR OWN SKY!

Unending panoramic view, a little bit of sunshine,
the cool breeze and your own piece of sky.

The unique design of the building & elevation allows each
office to have a personal terrace for the use. We at W1 have
not only taken care of inside spaces but also have designed an
experience for what you use and see outside the office.





W1 SIGNATURE
BUSINESS
SPACES





W1 SIGNATURE
BUSINESS
SPACES



KEY PLAN



SENSITIVE ENVIRONMENTS

501 Hrishikesh, Vasant Baug,
Gulbai Tekra, Ahmedabad 380 006

sensitiveenvironments@gmail.com

+91-98251 19967
+91-98250 63886

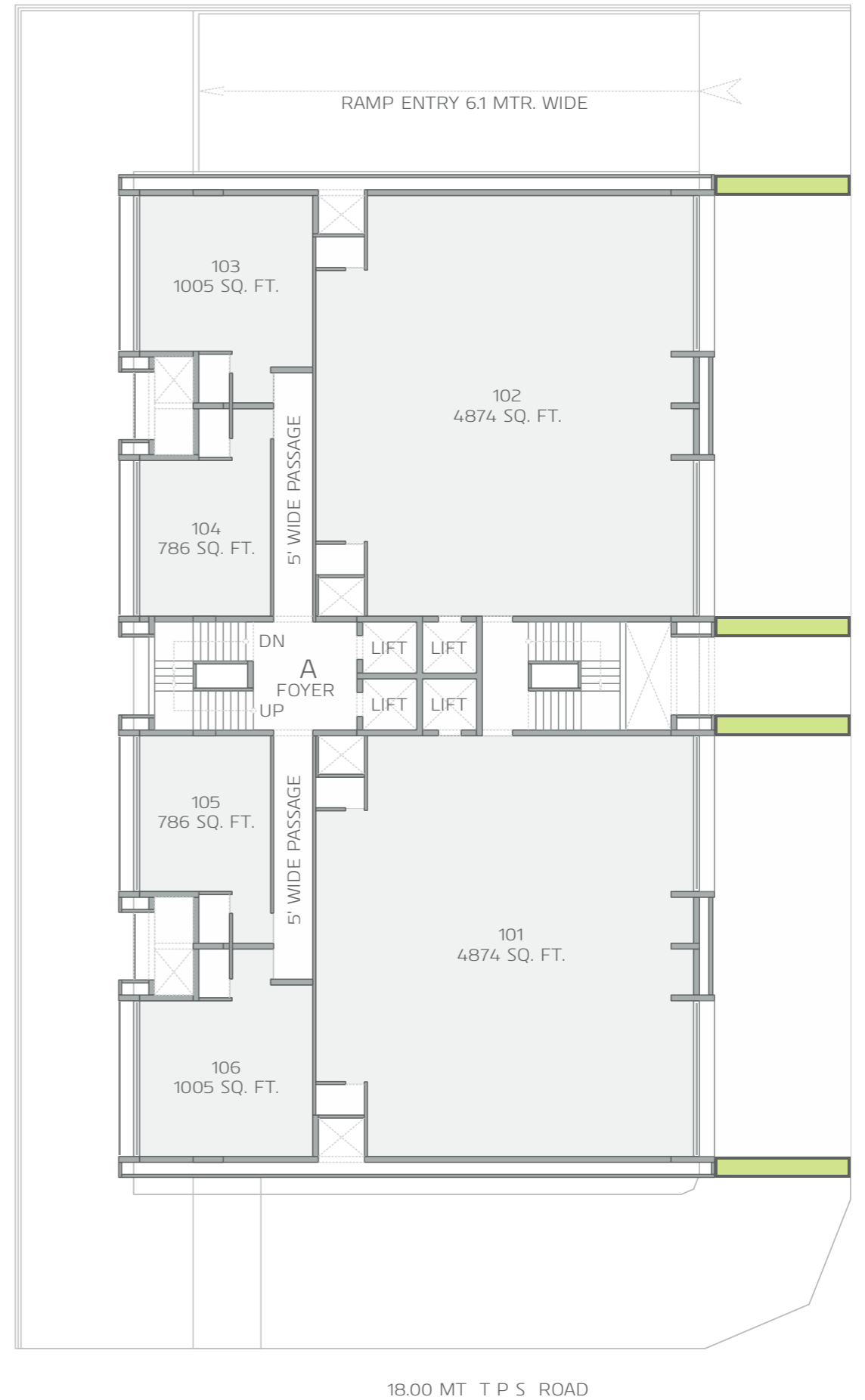
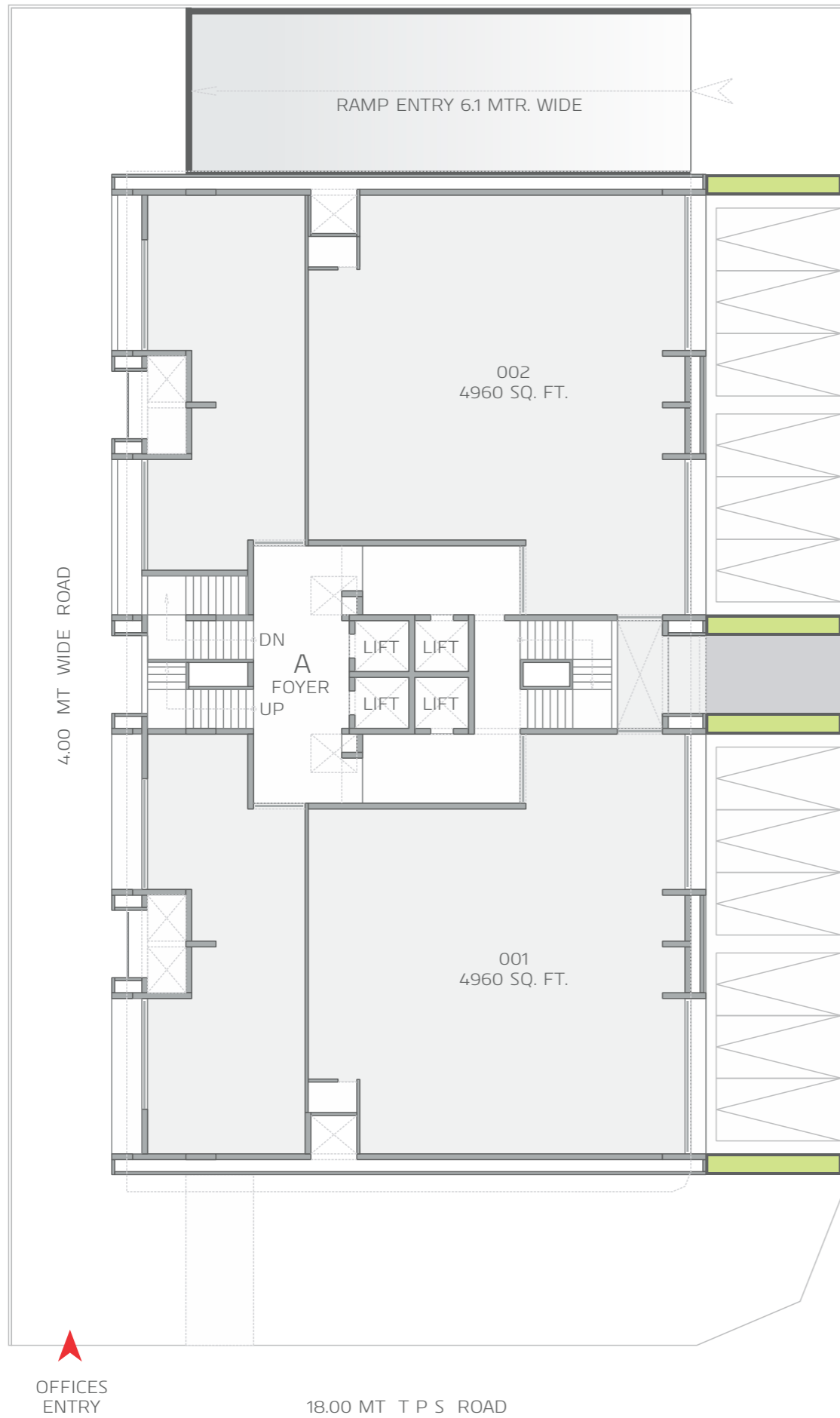
www.w1se.in

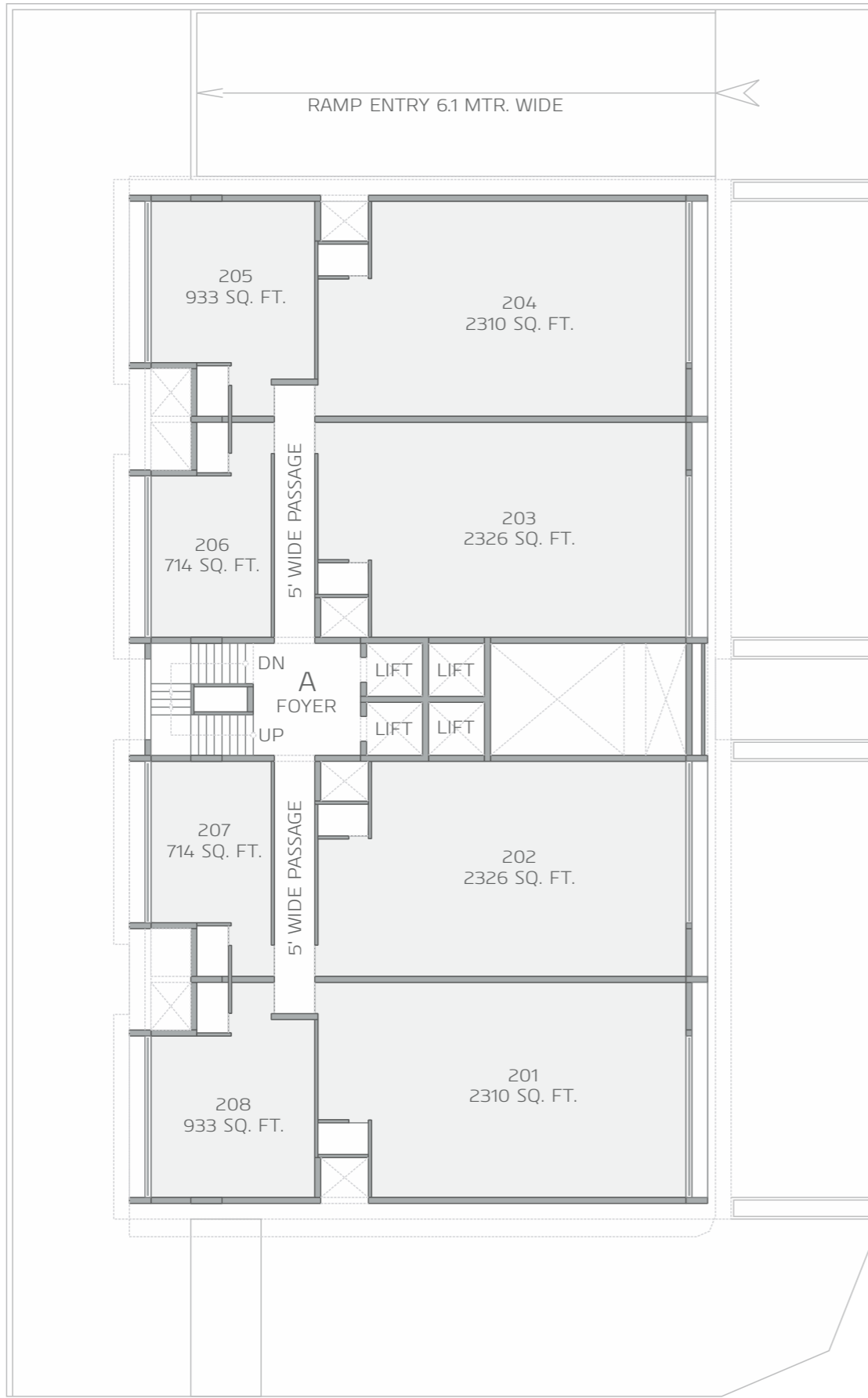




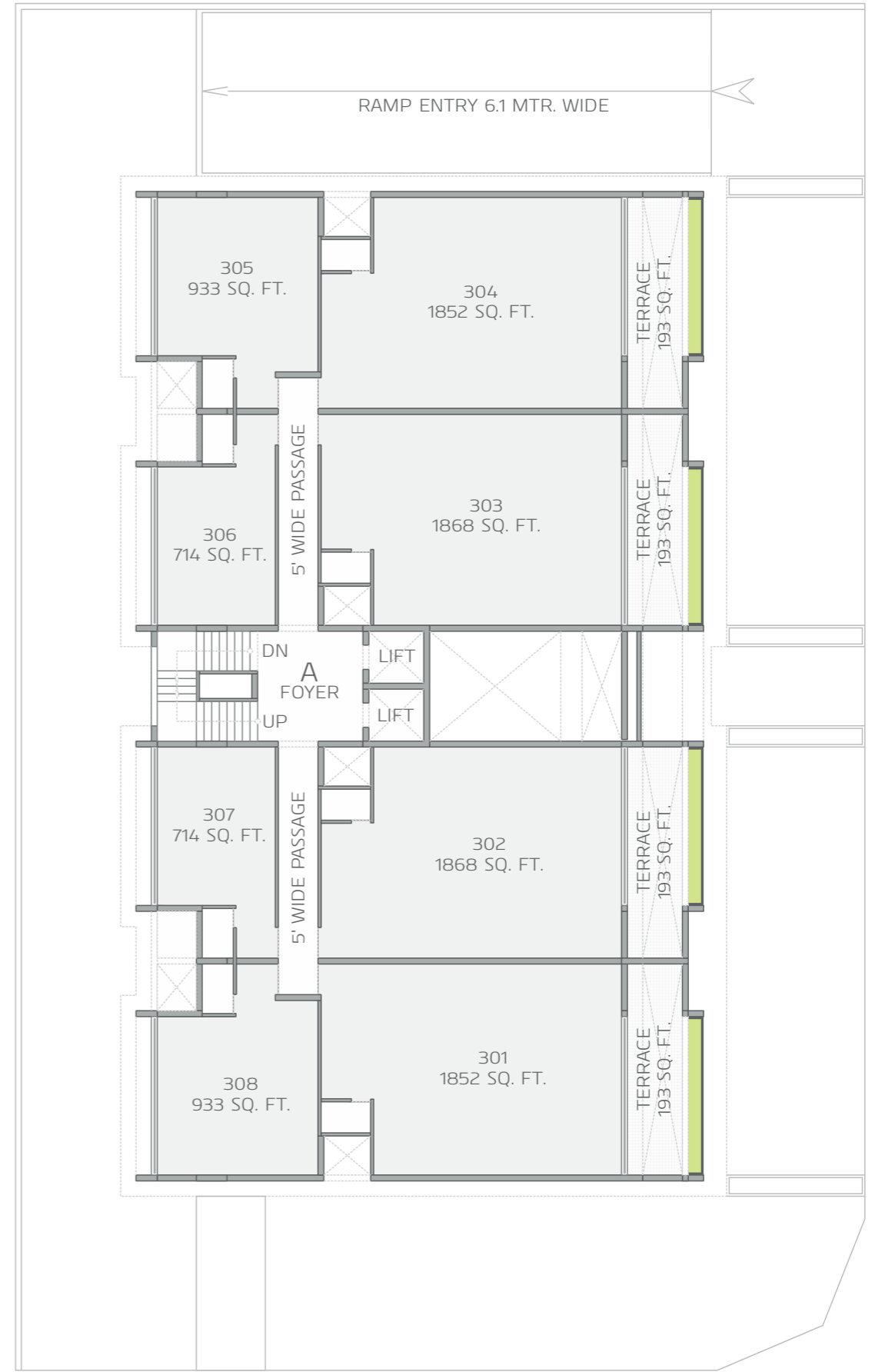
PLANS

W1 SIGNATURE
BUSINESS
SPACES



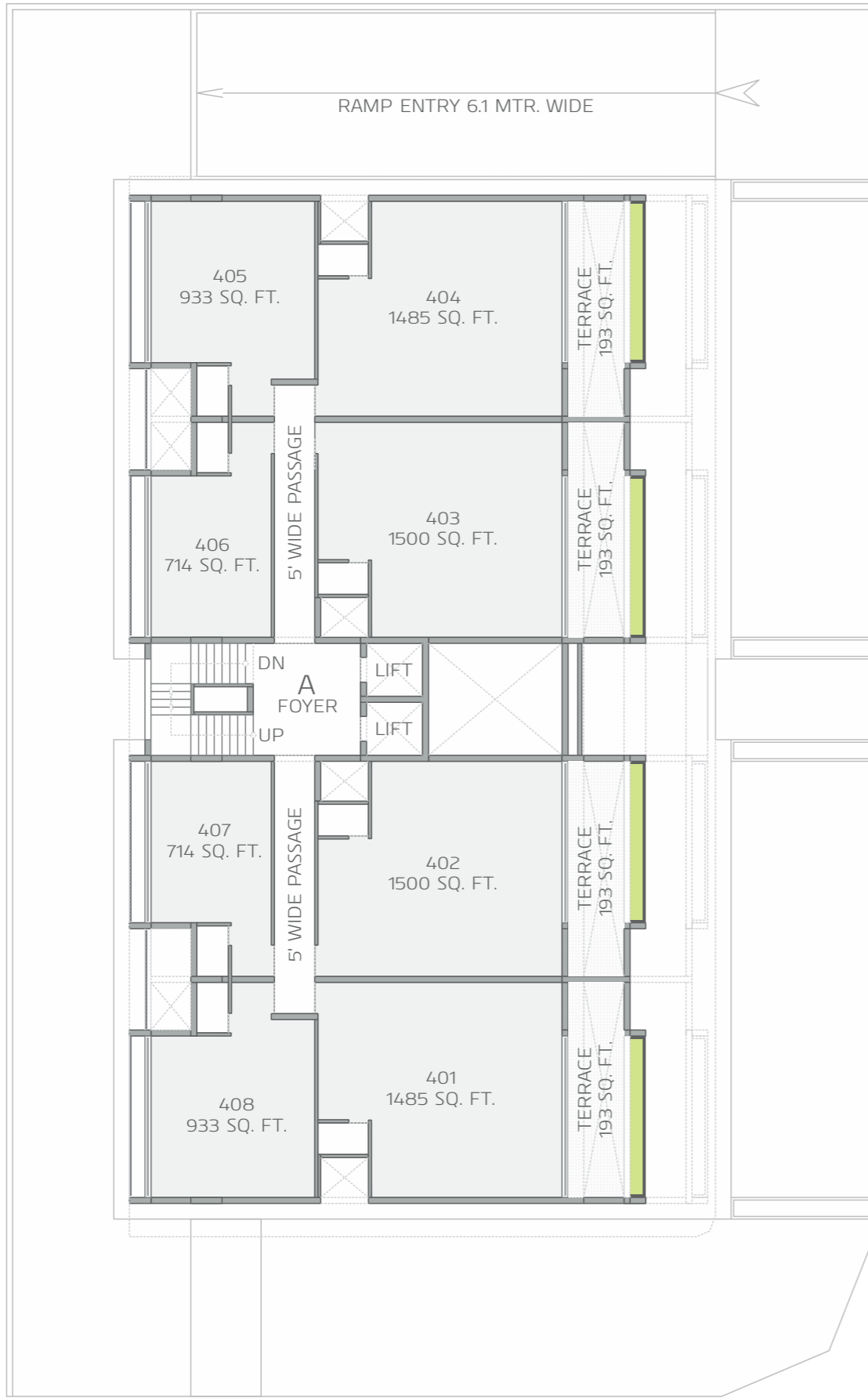


18.00 MT T P S ROAD

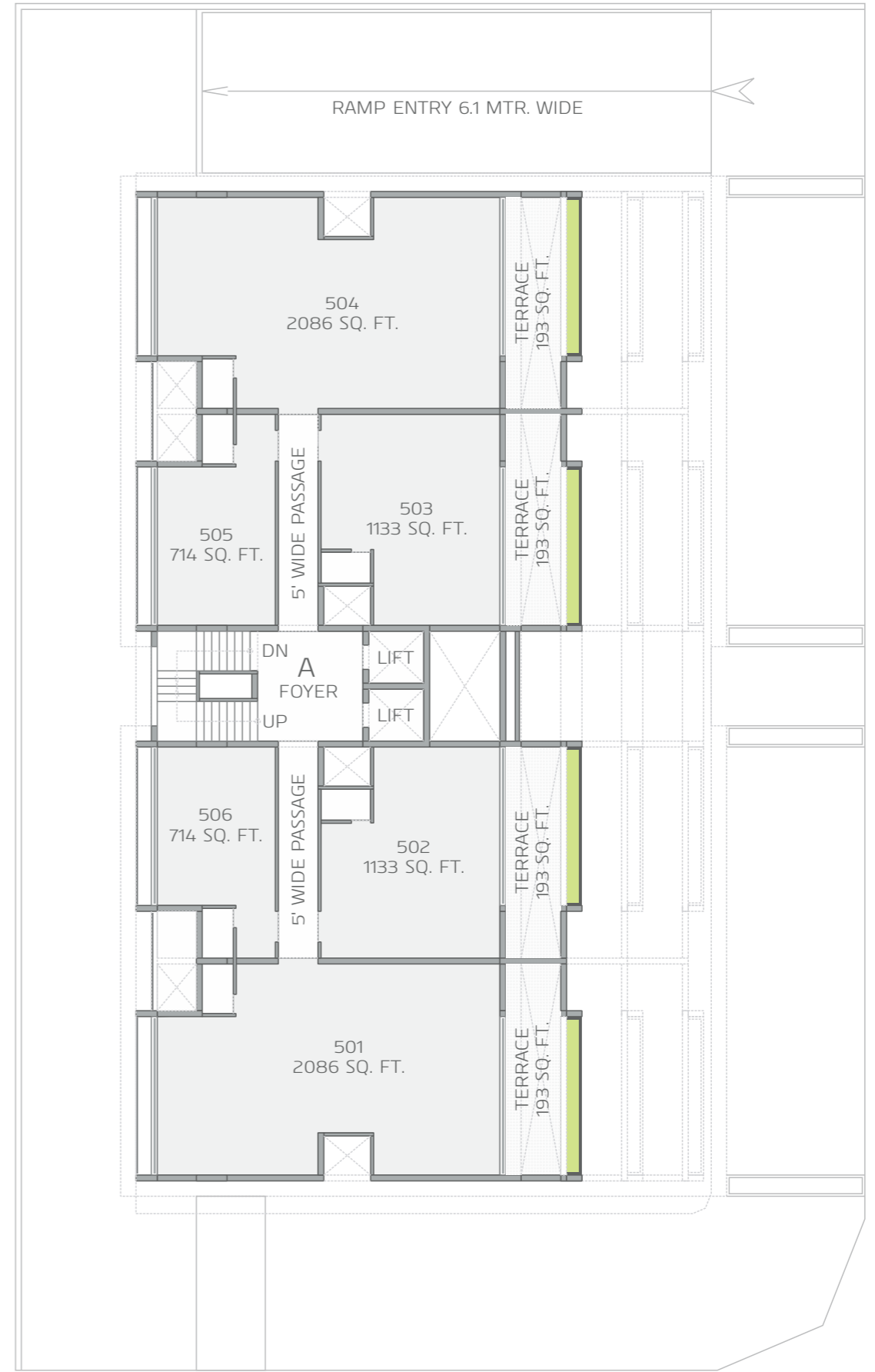


18.00 MT T P S ROAD



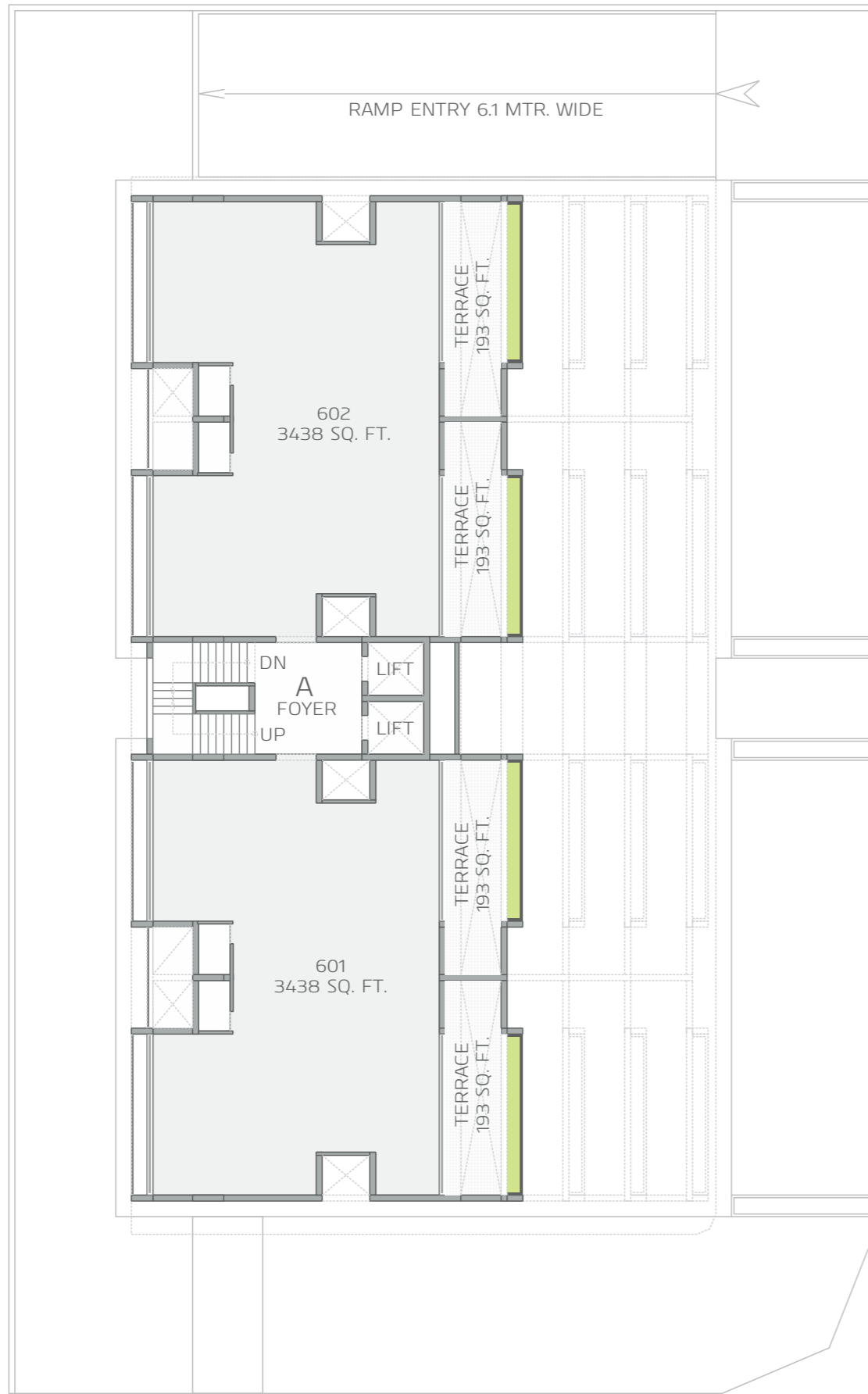


18.00 MT T P S ROAD

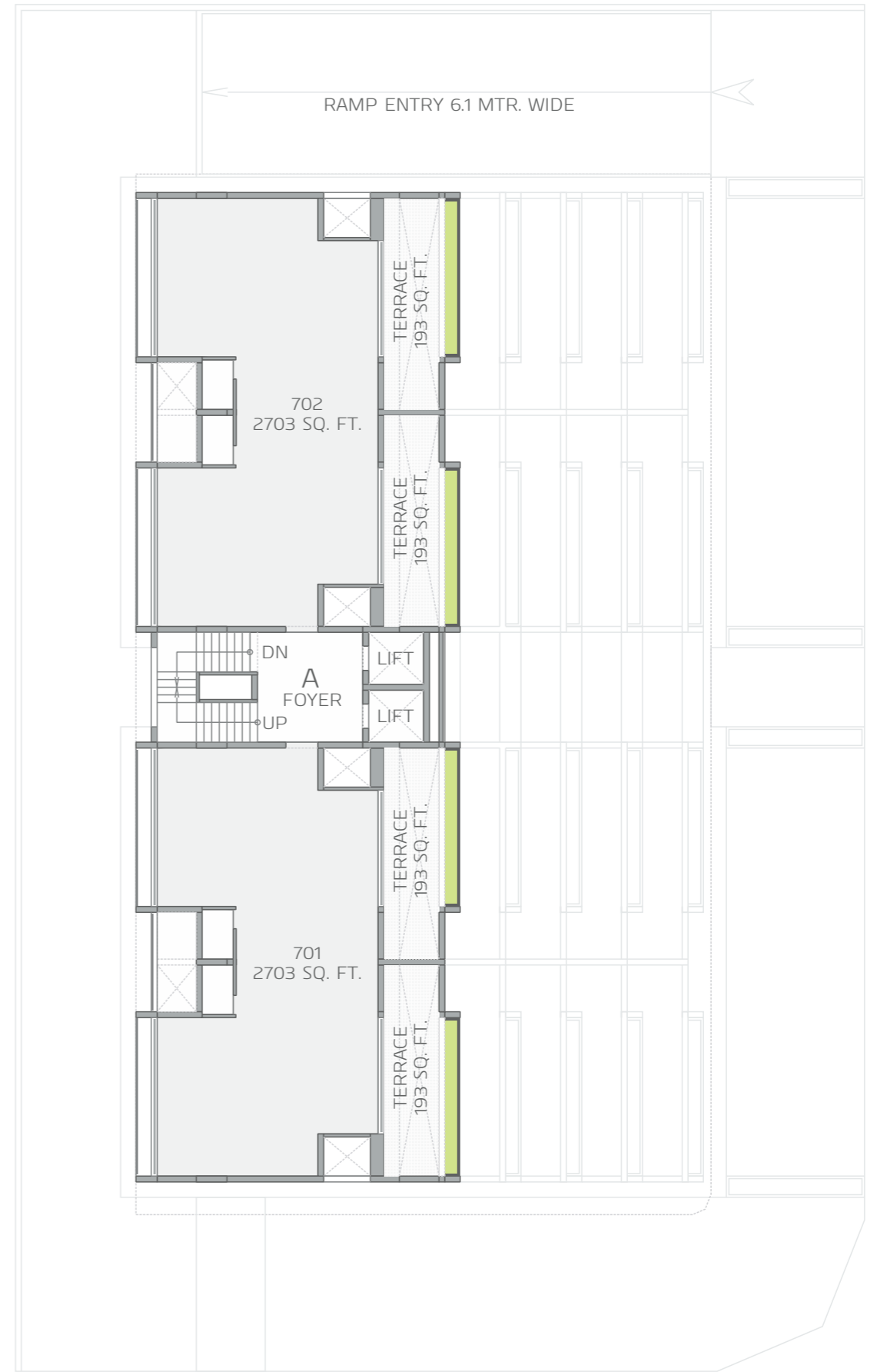
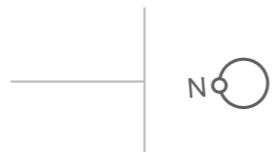


18.00 MT T P S ROAD



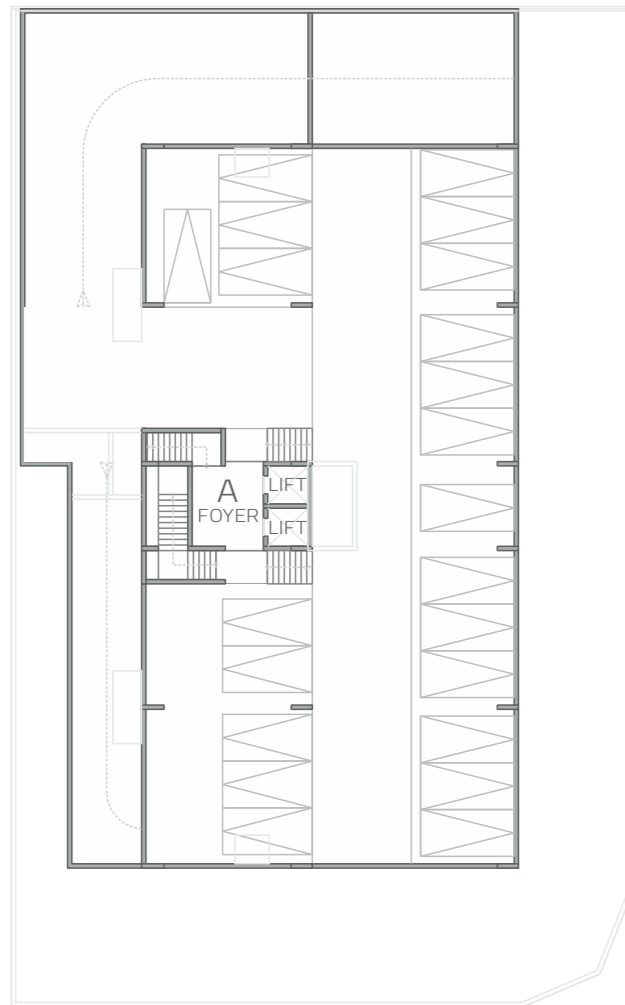


18.00 MT T P S ROAD

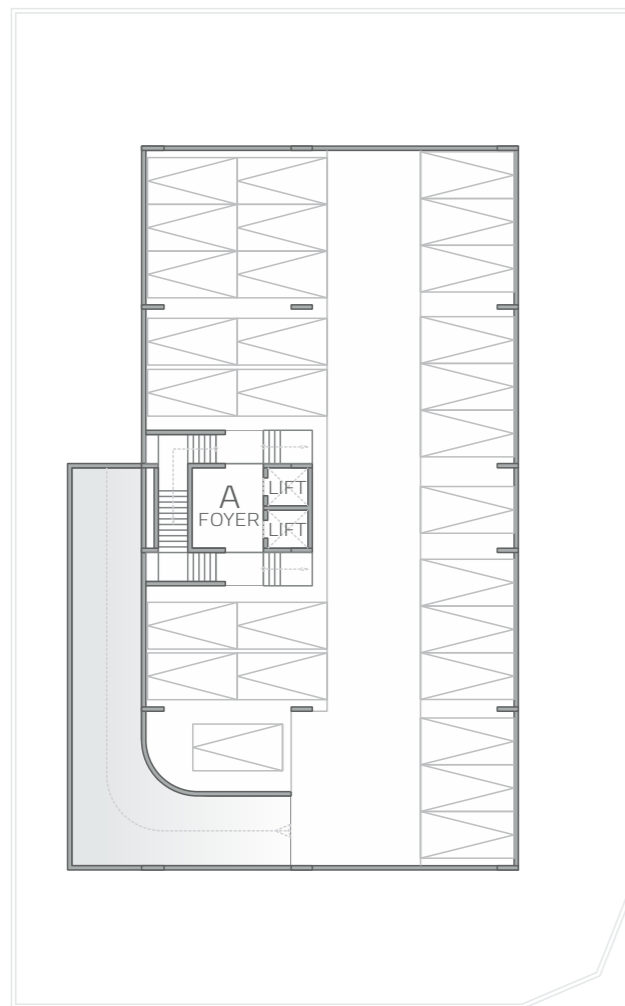


18.00 MT T P S ROAD





1st BASEMENT



2nd BASEMENT



SPECIFICATIONS

STRUCTURE

- Earthquake resistance R.C.C. structure

FLOORING

- Vitrified tiles in all offices

ELECTRIFICATION

- Concealed copper wiring
- Modular Switches

DOOR & WINDOWS

- Aluminium Windows with Glass
- Wooden Flush doors

TOILETS

- Well designed toilets with branded fittings

COLOR

- Internal walls finished with wall putty
- Weather shield acrylic emulsion paint for exteriors walls

ELEVATORS

- Branded automatic lifts for Offices
- Private lift for each Corporate House

SECURITY

- 24 hrs security with CCTV Surveillance

GENERAL FEATURES

- Automated Common Lighting & Water systems

PARKING

- Elevated parking at basement.

NOTES

- The developer reserves the rights to make necessary changes in above specifications without any prior notice. Such changes would be binding to all the members.
- Registration, AMC charges, Service Tax, VAT, TORRENT, any other Govt. taxes Maintenance charges will be borne by the members.
- The information contained in this brochure is subject to change as may be approved by the authorities and cannot form part of any offer or contract. All plans are subject to any amendments approved by the relevant authorities.
- Floor areas are approximate and subject to final survey. Illustrations in this brochure are artists impressions and serve only to give an approximate idea of the project. While every reasonable care has been taken in providing this information, its owners cannot be held responsible for any inaccuracy.
- External changes shall not be allowed only internal changes can be done with prior permission and shall be charged extra in advance.
- Subject to Ahmedabad jurisdiction.

SENSITIVE ENVIRONMENTS

501 Hrishikesh, Vasant Baug,
Gulbai Tekra, Ahmedabad 380 006

sensitiveenvironments@gmail.com

+91-98251 19967
+91-98250 63886

www.w1se.in

